

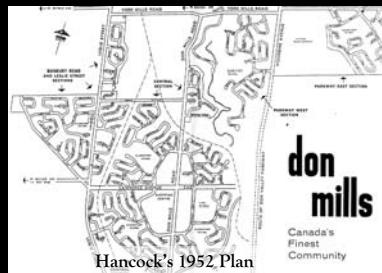
Learning from the Past: Canadian Urbanism Traditions

David Gordon, MCIP
School of Urban and Regional
Planning, Queen's University



CANADIAN URBANISM

Don Mills | Summary

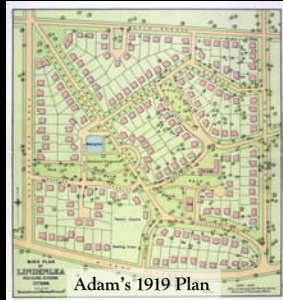


- Designed by Macklin Hancock in 1952
- Perry's neighbourhood unit
- Interconnected open space system; fit with topography
- Hierarchy of streets
- Mix of housing types; design review of houses
- Jobs - housing balance
- *Negative*: separation of uses and building types



CANADIAN URBANISM

Lindenlea | Summary



- Designed by Thomas Adams in 1919
- Garden suburb built between 1919-192 by the Ottawa Housing Commission
- Fit with topography
- Mix of street types
- Small scale open spaces
- Use more than one house type



CANADIAN URBANISM

Mount Royal | Summary



- Designed in 1912 by Frederick Todd
- Mixture of street patterns
 - hybrid, diagonal, & curvilinear
- Variety of housing types/architectural styles
- Combination of public transit methods
- Precursor to Calthrope's Transit-Oriented Development
- Wide boulevards and monumental vistas
- Abundance of recreational and open space; healthy living events



CANADIAN URBANISM

Hydrostone & Richmond Dist. | Summary



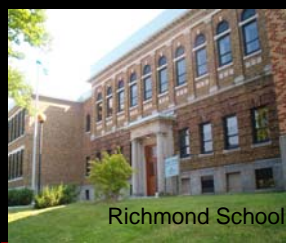
Hydrostone Retail

Richmond

- Garden suburb design
- Curving streets: conforming with topography

Hydrostone

- Alternating service lanes and residential streets
- Central boulevard parks
- Affordable housing hydrostone



Richmond School



CANADIAN URBANISM

Neighbourhood Statistics | Summary

	Hydrostone	Don Mills	Town of Mount Royal	Lindenlea
Population (2001)	640	N/A	18,682	450
Gross Density	32uph (12 upa)	10uph (4 upa)	10uph (4 upa)	19uph (7.5upa)
Net Density	115uph (46upa)	14uph (6 upa)	18uph (7 upa)	N/A
Lot Depth (typical)	25m (82ft)	30m (98ft)	30m (98ft)	26m (85ft)
Lot Frontage (typical)	7m (23ft)	18m (59ft)	15m (49ft)	12m (39ft)
ROW Width	5-10m (16-33ft)	20m (66ft)	20m (66ft)	N/A
Block Size (typical)	10,500m ² (2.6a)	18,500m ² (4.6a)	10,800m ² (2.7a)	13,100m ² (3.1a)
Block Frontage (typical)	122m (400ft)	243m (797ft)	180m (590ft)	218m (715ft)
Block Depth (typical)	86m (282ft)	76m (249ft)	60m (197ft)	60m (197ft)



CANADIAN URBANISM

Hydrostone & Richmond Districts, Halifax Thomas Adams, 1917



THE HYDROSTONE DISTRICT L'ARRONDISSEMENT HYDROSTONE

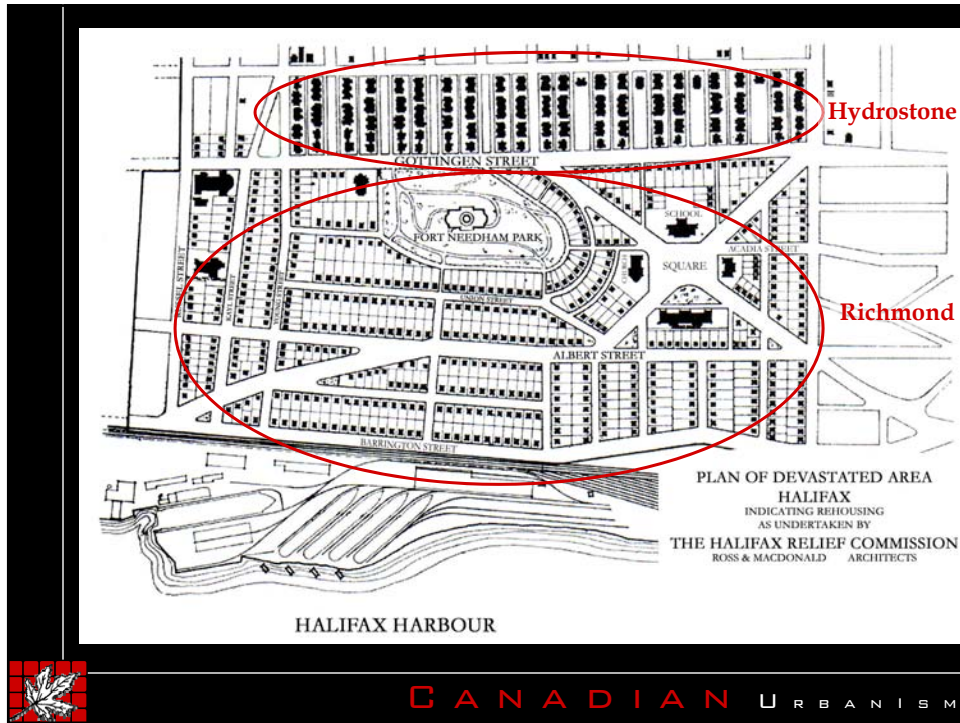
From the ashes of the catastrophic Halifax Explosion, which shattered the City's North End on 6 December 1917, rose the Hydrostone District, a splendid example of an English-style garden suburb. Completed in 1920, this well-preserved neighbourhood was designed according to the most up-to-date yet practical principles of town planning. The master plan featured three main elements: realigned streets, a large public park, and some 325 fireproof dwellings of the most modern type, served by a row of shops. The buildings, all variations on the same architectural theme and all constructed with "Hydro-Stone" concrete blocks, are aesthetically arranged along each side of wide treed courts. The houses and landscape contribute to a remarkable sense of time and place. The neighbourhood is an important achievement by the influential town planner Thomas Adams; it is also Canada's first government-assisted housing project.



Disaster in Halifax Harbour, 1917

Massive explosion levels communities along Halifax Harbour as *Imo* and the *Mont Blanc* collide, December 6th 1917. The neighbourhoods of Hydrostone and Richmond are completely destroyed.





Hydrostone Block Design

Block length	122 m
Block width	86 m
Block area	10500 m ²
Gross Density	32 du / ha.
Net Density	115 du / ha.
FAR	1.54
Lot depth	25 m
Lot Frontage	7 m
ROW width	5 - 10 m
Lane	4 m



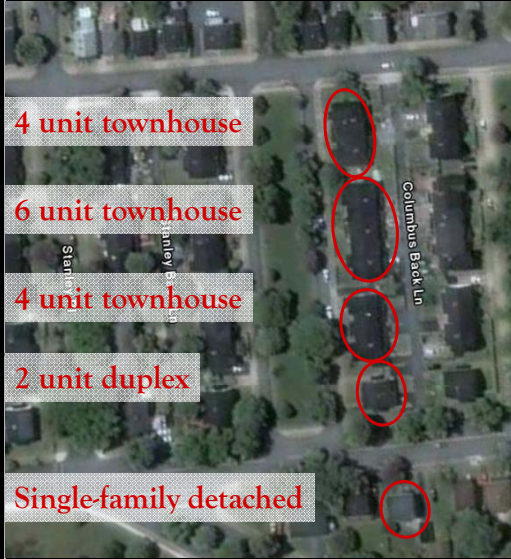
CANADIAN URBANISM

Hydrostone Street Design



CANADIAN URBANISM

Hydrostone Housing Transition



CANADIAN URBANISM

Hydrostone & Richmond - Lessons



Hydrostone Retail

Richmond:

- Garden Suburb Design
- Curving Streets: Conforming with Topography

Hydrostone:

- Alternating service lanes and residential streets
- Central boulevard parks
- Affordable housing: Hydrostone



Richmond School



CANADIAN URBANISM

Questions?

Presentation prepared by:
Tyler Nightingale
Greg Newman
Michelle Nicholson



CANADIAN URBANISM